

Wahlbeteiligung der Studierenden an der Universität Passau in den Jahren 2000 bis 2026

1) = Anzahl der wahlberechtigten Studierenden
2) = **Wahlbeteiligung** der Studierenden in %

StuPa = Studentischer Konvent / Studierendenparlament
JURF = Fakultätsrat Juristische Fakultät
WIWIF = Fakultätsrat Wirtschaftswissenschaftliche Fakultät
GeKuF = Fakultätsrat Geistes- und Kulturwissenschaftliche Fakultät

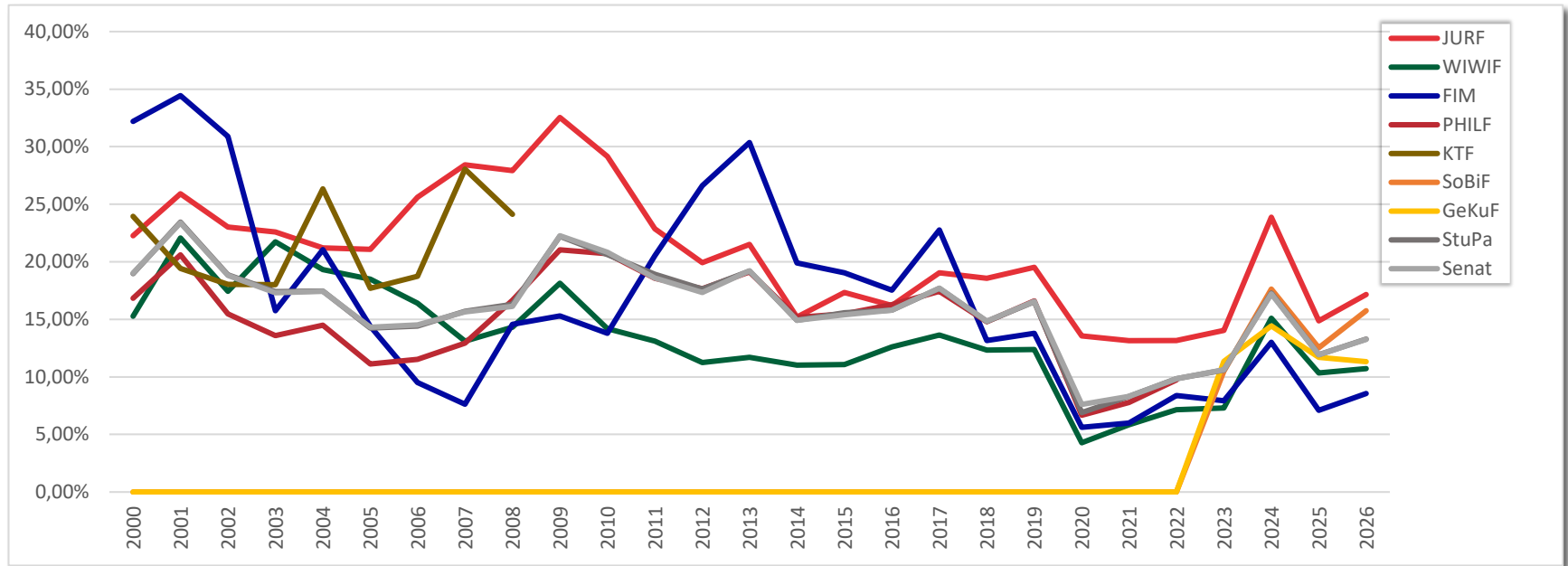
FIM = Fakultätsrat Fakultät für Informatik und Mathematik
PHILF = Fakultätsrat Philosophische Fakultät
KTF = Fakultätsrat Katholisch-Theologische Fakultät
SoBiF = Fakultätsrat Sozial- und Bildungswissenschaftliche Fakultät

Wahljahr	Senat		StuPa		JURF		WIWIF		FIM		PHILF		KTF		GeKuF		SoBiF	
	1)	2)	1)	2)	1)	2)	1)	2)	1)	2)	1)	2)	1)	2)	1)	2)	1)	2)
2000	7.354	19,01%	7.354	18,98%	1.878	22,26%	1.682	15,28%	441	32,20%	3.136	16,84%	217	23,96%	---	---	---	---
2001	7.413	23,38%	7.413	23,45%	1.802	25,92%	1.649	22,07%	572	34,44%	3.184	20,60%	206	19,42%	---	---	---	---
2002	1.538	18,82%	1.538	18,88%	1.677	23,02%	1.628	17,44%	628	30,89%	3.411	15,48%	194	18,04%	---	---	---	---
2003	7.945	17,31%	7.945	17,42%	1.563	22,58%	1.601	21,74%	699	15,74%	3.861	13,60%	221	18,01%	---	---	---	---
2004	8.260	17,43%	8.260	17,45%	1.354	21,20%	1.547	19,33%	665	21,05%	4.394	14,50%	300	26,33%	---	---	---	---
2005	8.688	14,32%	8.688	14,25%	1.337	21,09%	1.438	18,50%	625	14,40%	5.079	11,12%	209	17,70%	---	---	---	---
2006	8.903	14,52%	8.903	14,41%	1.405	25,62%	1.316	16,41%	588	9,52%	5.370	11,53%	224	18,75%	---	---	---	---
2007	8.572	15,64%	8.572	15,71%	1.361	28,43%	1.183	13,10%	536	7,64%	5.271	12,94%	221	28,05%	---	---	---	---
2008	8.518	16,13%	8.518	16,31%	1.332	27,93%	1.292	14,32%	548	14,58%	5.124	16,66%	228	24,12%	---	---	---	---
2009	8.374	22,26%	8.374	22,22%	1.463	32,54%	1.311	18,15%	523	15,30%	5.077	21,04%	---	---	---	---	---	---
2010	8.719	20,82%	8.719	20,62%	1.578	29,15%	1.467	14,18%	573	13,79%	5.101	20,70%	---	---	---	---	---	---
2011	9.762	18,59%	9.762	18,93%	1.871	22,88%	1.707	13,12%	619	20,52%	5.565	18,56%	---	---	---	---	---	---
2012	10.243	17,34%	10.243	17,64%	2.018	19,92%	1.618	11,25%	665	26,62%	5.942	17,65%	---	---	---	---	---	---
2013	10.193	19,21%	10.193	19,20%	2.036	21,51%	1.462	11,70%	636	30,35%	6.062	19,12%	---	---	---	---	---	---
2014	11.606	14,91%	11.606	14,92%	2.239	15,19%	1.851	11,02%	834	19,90%	6.682	15,16%	---	---	---	---	---	---
2015	11.957	15,40%	11.957	15,58%	2.272	17,34%	1.904	11,08%	1.024	19,04%	6.757	15,48%	---	---	---	---	---	---
2016	11.992	15,80%	11.992	15,79%	2.313	16,21%	1.903	12,61%	1.203	17,54%	6.573	16,29%	---	---	---	---	---	---

Wahlbeteiligung der Studierenden an der Universität Passau
in den Jahren 2000 bis 2026

Wahljahr	Senat		StuPa		JURF		WIWIF		FIM		PHILF		KTF		GeKuF		SoBiF	
	1)	2)	1)	2)	1)	2)	1)	2)	1)	2)	1)	2)	1)	2)	1)	2)	1)	2)
2017	11.918	17,72%	11.918	17,69%	2.878	19,05%	1.875	13,65%	1.309	22,77%	6.456	17,43%	---	---	---	---	---	---
2018	12.282	14,84%	12.282	14,83%	2.252	18,56%	1.750	12,34%	1.581	13,16%	6.699	14,79%	---	---	---	---	---	---
2019	12.128	16,56%	12.128	16,53%	2.233	19,52%	1.583	12,37%	1.560	13,78%	6.752	16,60%	---	---	---	---	---	---
2020	11.895	7,61%	11.895	6,90%	2.153	13,56%	1.659	4,28%	1.458	5,62%	6.625	6,67%	---	---	---	---	---	---
2021	11.953	8,30%	11.953	8,30%	2.257	13,15%	1.695	5,84%	1.432	6,00%	6.569	7,77%	---	---	---	---	---	---
2022	11.393	9,83%	11.393	9,84%	2.195	13,17%	1.583	7,14%	1.518	8,37%	6.097	9,73%	---	---	---	---	---	---
2023	10.552	10,61%	10.552	10,59%	2.059	14,04%	1.425	7,30%	1.414	7,92%	---	---	---	---	2.579	11,36%	3.075	10,50%
2024	10.321	17,22%	10.321	17,28%	2.078	23,87%	1.312	15,09%	1.415	13,00%	---	---	---	---	2.765	14,43%	2.751	17,63%
2025	10.056	11,94%	10.056	11,93%	2.193	14,87%	1.275	10,35%	1.422	7,10%	---	---	---	---	2.843	11,71%	2.323	12,53%
2026	9.936	13,25%	9.936	13,29%	2.303	17,15%	1.297	10,72%	1.342	8,57%	---	---	---	---	2.880	11,32%	2.114	15,75%

Wahlbeteiligung der Studierenden
an der Universität Passau
in den Jahren 2000 bis 2026



**Wahlbeteiligung der Studierenden
an der Universität Passau
in den Jahren 2000 bis 2026**

